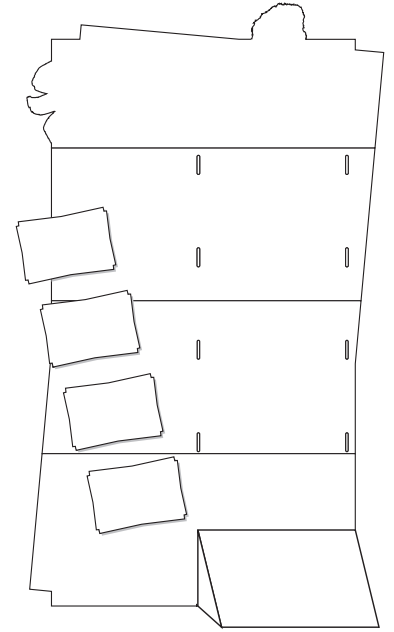
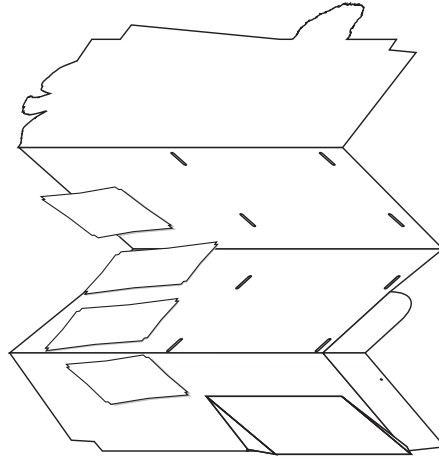
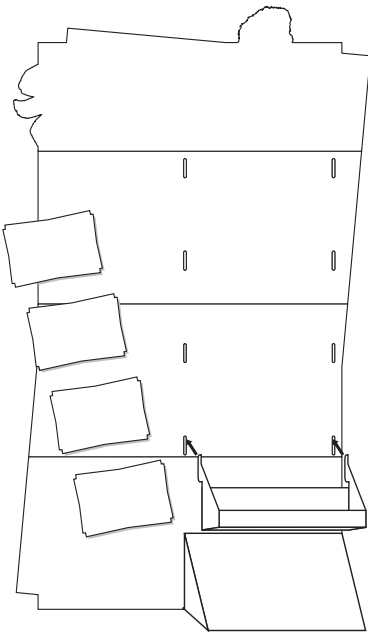


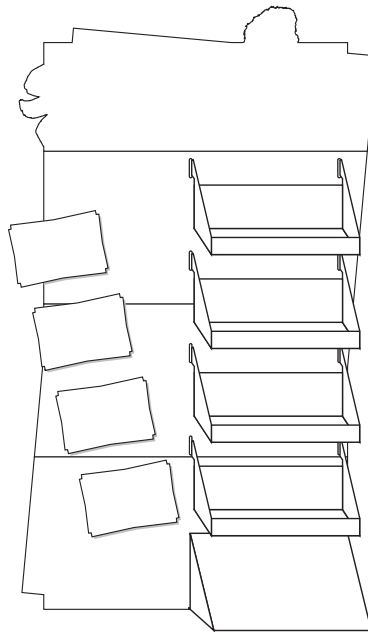
1. Lift up.



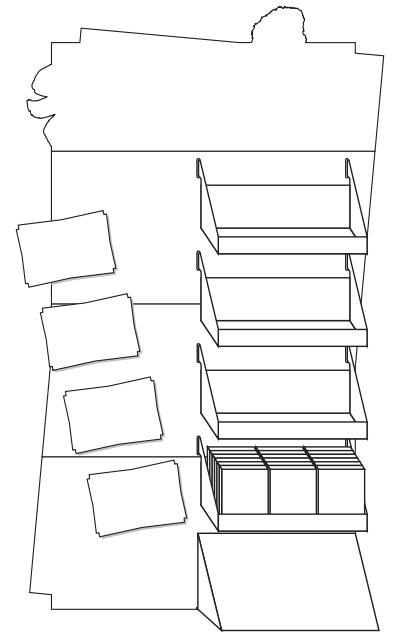
2. Display pops into place.



3. Lock shelf tabs into holes.



4. Assembly complete!



5. Load display from bottom to top.

IMPORTANT: PLEASE NOTE

Load display from bottom to top.

Do NOT drag or move display across the floor when loaded with product.

In the event that these instructions are not properly followed, Poptech will not be held responsible for any problems associated with the display.