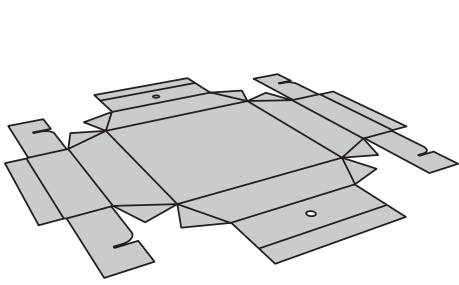
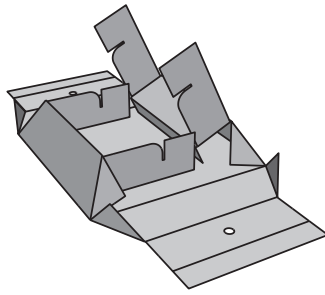


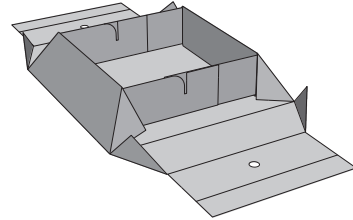
MULTI ANGLE DISPLAY ASSEMBLY



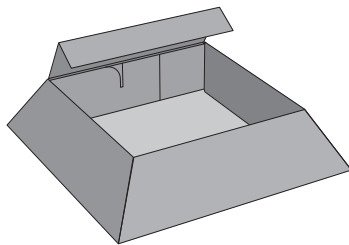
1. Start with printed side of angled base facing down.



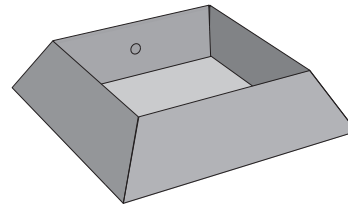
2. Fold up sides with locking flaps.



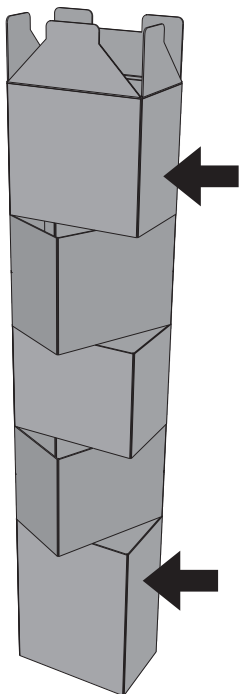
3. Lock flaps together and tuck in edge flaps.



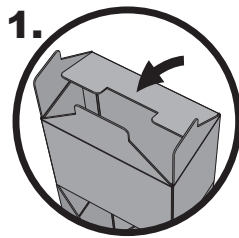
4. tuck in edges on remaining flaps and fold flaps down into base.



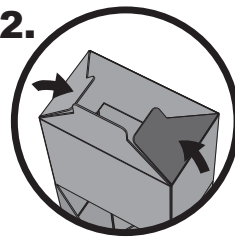
3. Angled base assembly complete.



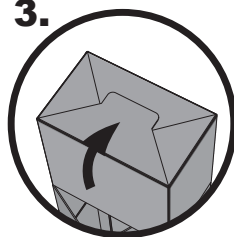
1. Square up tower.



1.

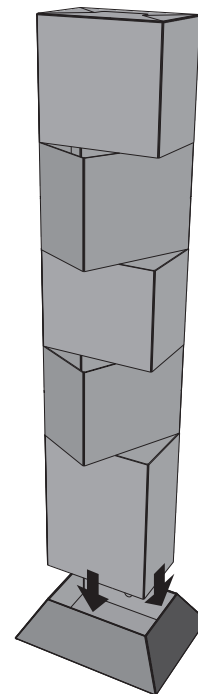


2.



3.

2. Fold in top flaps in order shown. Push down last flap until it slides through opening created by the other flaps.



3. slide tower into base.

IMPORTANT: PLEASE NOTE

In the event that these instructions are not properly followed, Poptech will not be held responsible for any problems associated with the display.